



MONTHLY MEMBERSHIP PROGRESS REPORT

District 321B1

Results as of: 03/31/2018

GMT: ANIL TULSYAN

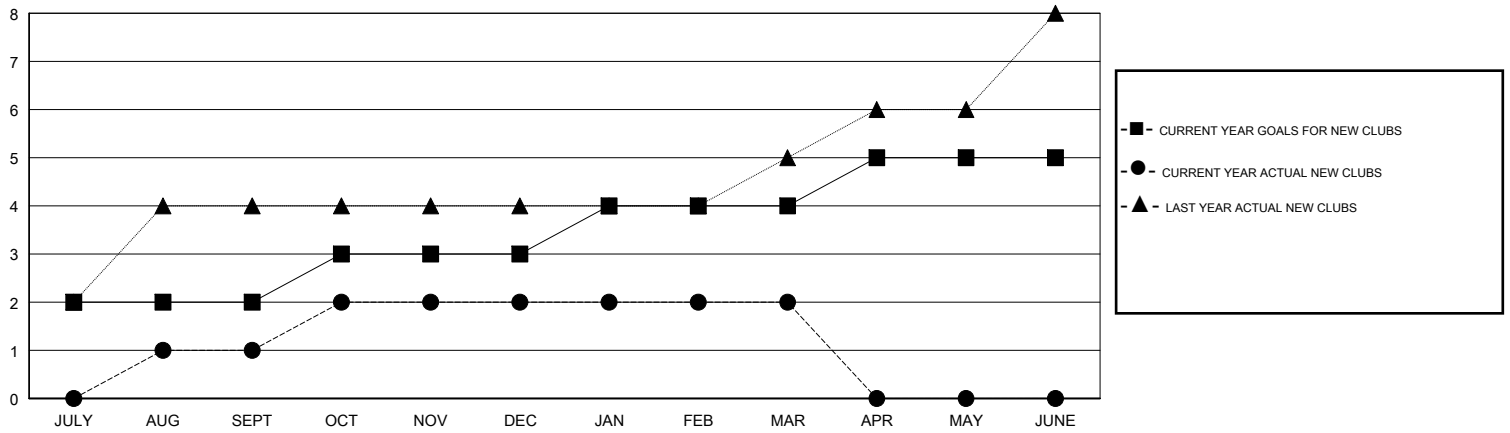
LOCATION INDIA

GMT CA

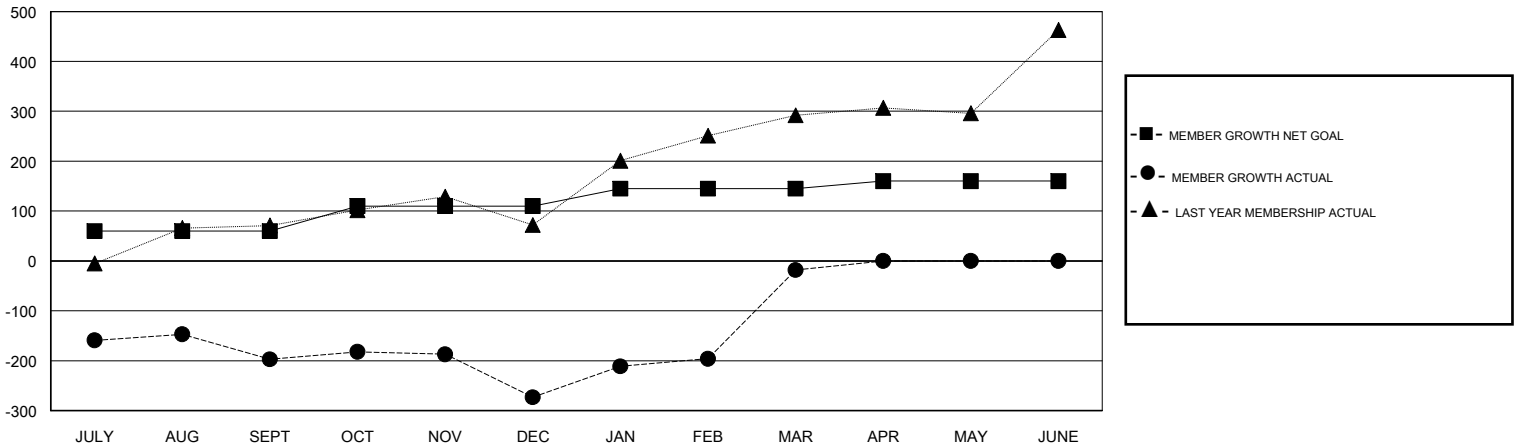
Clubs			
RESULTS FOR 2017-2018			
QUARTER	NEW CLUB GOAL	NEW CLUBS	DROPPED CLUBS
JULY/AUG/SEPT	2	1	0
OCT/NOV/DEC	1	1	5
JAN/FEB/MAR	1	0	0
APR/MAY/JUNE	1	0	0

Members			
RESULTS FOR 2017-2018			
QUARTER	MEMBER GROWTH NET GOAL	MEMBER GROWTH ACTUAL	DROPPED MEMBERS ACTUAL (including transfers)
JULY/AUG/SEPT	60	52	243
OCT/NOV/DEC	50	68	126
JAN/FEB/MAR	35	342	15
APR/MAY/JUNE	15	0	0

GOALS AND ACTUAL NEW CLUBS CUMULATIVE



GOALS AND ACTUAL MEMBERS CUMULATIVE



DROPPED CLUBS: 5	37 CLUBS OF 87 ADDED 1 OR MORE NEW MEMBERS	<u>GENDER DISTRIBUTION</u>	
DROPPED MEMBERS		MALE	1,691 (59.06%)
DECEASED	3	FEMALE	1,172 (40.94%)
CLUB CANCELLED	83	Women Percentage Fiscal Year Goal: 40%	
OTHER	297	TOTAL FAMILY UNIT MEMBERS	1,676
TOTAL	383	FAMILY MEMBERS PAYING HALF DUES	897

[CLICK HERE FOR CUMULATIVE MEMBERSHIP DATA](#)